

## **Darebin City Council Waste Management Guidelines 2021**

### **Developments of less than 10 units (use the WMP template attached)**

1. Council waste services should be used to minimise noise, road damage, air pollution and traffic.
2. Each dwelling must have access to a waste bin, recycling bin, food/ garden waste bin (FOGO) and space for a glass bin in the future. Glass is approximately 30% of recycling. If recycling bins are shared a bin can be replaced by a glass bin.
3. Shared bins are preferred for 4 plus dwellings in a screened area that is easy to access for all residents.
4. If bin sharing is utilised the litres must be based on the table below.
5. The cost of all shared bins must be equally paid for by all residents.
6. If bin sharing does occur a condition must be written to say the development cannot have their own bins in the future and an 'alternative bin arrangement' note must be lodged in pathways and GIS.
7. Bins must not be located within the minimum garage area of 3500 X 6000mm. Store in the Private Open Space (POS), provide a separate area or store in a shared area. Bins cannot be taken through the dwelling.
8. A plan must be provided to demonstrate that all the bins can fit on the nature strip for collection with a minimum of 300mm between each bin.
9. Bins collected by the council cannot weigh more than 30kg.
10. Provide details on how demolition waste will be reused or recycled, how material packaging will be reduced, on how recycled materials will be used in the development and how the materials will be recycled when the development is renovated and demolished.

**Table 1 Weekly residential waste generation rates June 2021**

Unit Size	Garbage Capacity/week  (Can be reduced if FOGO bins supplied)	Recycling Capacity collected fortnightly  (When glass collection starts a recycling bin can possibly be replaced if sharing bins. If recycling bins are not shared add extra space to shared bin areas for a glass bin. Glass is 30% of recycling when not contaminated. Bin sizes and collection frequency have not been determined, but must be provided by 2027).	FOGO  (Food organics garden organics) Food waste collected fortnightly (40% total waste). Add more if garden waste is required.
1 Bed	60L	160L (80L/week)      Glass 24L/week	50L (25L/week)
2 Bed	80L	200L (100L/week)      Glass 30L/week	80L (40L/week)
3 Bed+	80L	240L (120L/week)      Glass 36L/week	90L (45L/week)

### **Below are approximate number of shared bins required.**

The number of bedrooms could increase the number of recycling and glass bins

The bins must fit on the street with 300mm between bins. Waste/recycling will be one week and waste/FOGO the next week. Glass collection is to be determined. The collection frequency for all bins may change.

Number of dwellings	Waste 240L Collected weekly	Recycling 240L Collected fortnightly	Food/Garden (FOGO) 120L collected fortnightly	Glass – allow for 240L (TBD)
4	1	4	3	1
5	2	4 or 5	4	1
6	2	5 or 6	5	2
7	2	6 or 7	6	2

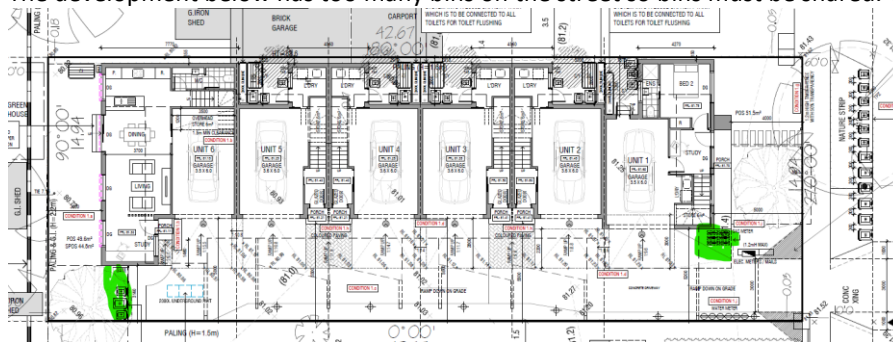
# 10 + units, mixed use and non-residential developments

(Provide a professional WMP)

1. For developments of 10+ units in general private waste collection will be needed. Council waste services might be possible if there is a long street frontage.
2. It is preferred if bins are collected from basement carparks or from the rear lane to limit obstructions to cars, trams, pedestrians and businesses who use the footpath. Avoid collection from the nature strip.
3. Private bins must not be stored on council land for collection wherever possible.
4. A waste management plan must be provided including plans showing the location of all bins when stored and collected and/or chutes, bin wash down areas, ventilation, loading bay, number of collections, how and where trucks will empty the bins and turning circles for trucks.
5. All bins must be conveniently located for all residents, accessible at all times and ideally on the ground floor near a lift or stairs.
6. Bin rooms need natural light and ventilation to reduce energy and light and passive surveillance for safety.
7. The WMP must use the rates of waste, recycling, glass and food/garden waste based on the table below.
8. Waste and recycling collection must be limited to once or twice a week to minimise trucks on the street.
9. If a development is 4 storeys or more then separate waste and recycling chutes should be installed.
10. Space must be provided for E-waste and hard waste. Hard waste items from multi-unit developments are not permitted to be placed on the kerb for council or private collection. On-site hard waste storage, at a rate of 1 m<sup>2</sup> per 20 apartments, must be provided and collected by a private contractor.
11. Provide details on how demolition waste will be reused or recycled, how material packaging will be reduced, on how recycled materials will be used in the development and how the materials will be recycled when the development is renovated and demolished.
12. The City of Darebin recommends all unit developments with 50+ apartments provide space for one charity bin. Charity bins are available in various sizes, however 1 m<sup>2</sup> is adequate for most developments.
13. Use the City of Melbourne guide 2017 for commercial waste.  
<http://www.melbourne.vic.gov.au/sitecollectiondocuments/waste-management-plan-guidelines.pdf>
14. Bins for commercial developments - Darebin Council will provide an 80 Litre waste bin collected weekly and up to 2X 240L recycling bins collected fortnightly for local businesses. There is a one time cost of \$98.40 per bin for the recycling bins and the application form is online.  
<http://www.darebin.vic.gov.au/en/Darebin-Living/RubbishRecyclingandCleaning/Recycling>

## Examples of where shared bins could be located.

The development below has too many bins on the street so bins must be shared. Green shows possible locations



Below – shared bins are OK on the driveway where there are no windows to the dwelling





# Darebin Waste Management Plan

This form may be used for residential planning applications with less than 10 individually rateable apartments or townhouses that **propose to use council waste services**. Larger scale developments and mixed use require a more detailed WMP.

**Planning application number:** .....

**Address:** .....

**Land use type:** Residential / Mixed

No of dwellings	Garbage - weekly collection	Food waste/ Green waste FOGO – fortnightly collection	Recycling – fortnightly collection	Glass
.....	1 X 80L bin per dwelling or 3 units (with any number of bedrooms) share a 240L bin for 4 or more dwellings. Shared bins are preferred.	Shared bins between residents and the cost is spread to all residents through the body corporate fees.	1 per dwelling OR bin sharing for 1 or 2 bedroom units at a rate of 80L/ 1 bed and 100L/ 2 bed per week. 3+ bedroom require 120 litres/fortnight	25% of recycling
<b>Total bins required</b>	..... x 80L bins OR .....240L bins	.....x 120L bins	..... x 240L bins	..... x 240L bins
<b>Bin size</b>	80L - 550mmL X 475mmW	120L – 545mmL X 480mmW	240L – 720mmL x 580mmW	

- **NOTE IF BIN SHARING OCCURS AN 'ALTERNATIVE BIN ARRANGMENT' NOTE MUST BE PUT INTO PATHWAYS TO ALERT ADMINISTRATION TO NOT PROVIDE BINS FOR EACH UNIT AT A LATER DATE**

**Collection frequency:** Once per week for waste, fortnightly for recycling and FOGO (for council services)

**Waste collection location:** Front of property (council only collects from the front)/ rear of property /.....

**Waste collection contractor:** City of Darebin or private (council is preferred to reduce pollution, trucks on the street)

**Provide scaled waste management drawings with dimensions, storage area including space for a shared 240 litre glass bin and collection location of all bins with a minimum of 300mm between bins:**

(insert drawings over the page or submit as attachment or on the plans)