

Council Meeting – 2 September 2013 – Council Support of Pensioner Groups: **Appendix A – Aged & Disability Funding and Support Model.**

The Best Value Service Review of Aged & Disability Services Branch resulted in Future Directions (October 2001) in three key areas:

- Healthy Ageing
- Social and Community Support
- Service Provision.

Social and Community Support refers directly to the social support of Darebin's diverse Senior Citizens Clubs and Older Adult Groups.

Significant consultation with stakeholders took place to identify and discuss issues and concerns regarding social and community support. This consultation formed a framework for developing a new model of support to senior citizens clubs and older adult groups, and identified four key areas for review:

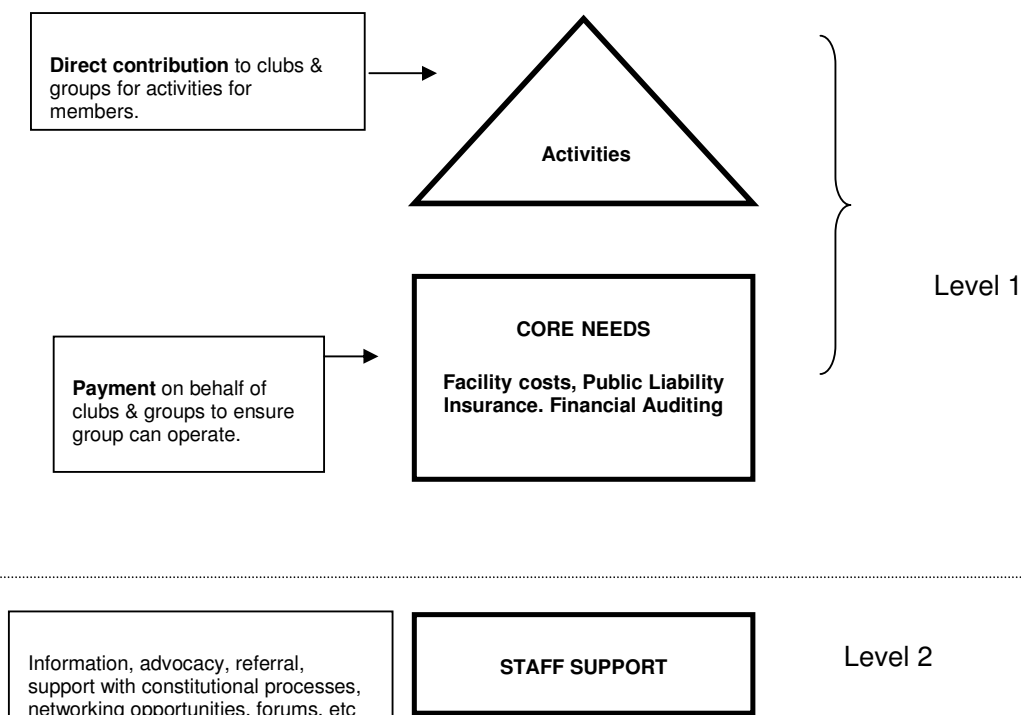
- Participation – Completed May 2003
- **Funding** – Completed March 2004
- Facilities – integrated into Council Asset Management Program
- Active & Healthy Ageing – completed 2011

Work groups consisting of representatives of clubs and groups were established for each key area to:

- Reaffirm our understanding of core issues;
- Represent issues around ageing, culture and participation;
- Discuss and challenge options presented and consequences of change;
- Contribute to problem solving; and
- Provide advice about the implications of strategies and processes.

The **Funding Work Group** was established in July 2003 (including 10 residents) and completed its work in seven months. In addition to the Funding Work Group, stakeholder participation occurred through forums and included Councillor participation.

Leave this in: The Funding Work Group developed a draft model to meet the objectives of the review and included **two levels of support**:



The model which includes Level 1 and Level 2 support has the aim of encouraging a diverse range of social opportunities for Darebin residents to participate in community life.

Council Meeting – 2 September 2013 – Council Support of Pensioner Groups: **Appendix A – Aged & Disability Funding and Support Model.**

Level 2 Support is available to all groups and clubs in Darebin, and consists of access to staff for:

- Networking and promotion;
- Facilitation of forums;
- Information provision;
- Assistance with constitutional processes; and
- Other areas of need as identified by clubs and groups.

Level 1 Support is available to all groups and clubs which meet agreed eligibility criteria. This support consists of:

- Payment of core needs, eg., facility costs, public liability insurance; and
- Financial contribution towards club activities.

The proposed model for Level 1 Support clarified **3 key guidelines**:

- (a) Eligibility criteria;
- (b) Process for new applicants;
- (c) Allocation of activities contribution; and

Eligibility Criteria:

Groups Receiving Level 1 Support	New Applicants
<ul style="list-style-type: none"> • Darebin based group; • 60% Darebin resident members • 80% members aged 55 years and over; • Incorporated as own entity and not part of an umbrella group; • Public liability insurance (paid by Council) • Club/group purpose is consistent with purpose of funding and support; 	<p>Comply with criteria and in addition:</p> <ul style="list-style-type: none"> • 100% of members are not members of another club or group receiving Level 1 Support under this model; If unmet, the number of Darebin Resident Members not attending other clubs or groups equates to a substantial amount of individuals that if, on their own, could establish their own group. In this case, not the full suite of support under Level One would be afforded to the group, the group will be asked to express what their greatest need out of these support options are. Activities Grant will only be calculated on number of Darebin resident members not participating in other groups supported by this model. • Prepared to meet in a Council facility or pay their own rental in privately owned premises; • Are not a splinter group (broken away and Incorporated) from another Club/group receiving Level 1 Support under this model; • Are incorporated as a separate entity and not part of an umbrella/auspice organisation; • Can demonstrate a significant difference in either cultural background or in meeting a specific need that cannot be met by other existing groups receiving Level 1 Support; • Prepared to meet with Council staff and existing groups to ascertain scope of merging or having needs met with a group receiving Level 1 Support under this model • Have own Public Liability Insurance upon applying for funding and support under this model